



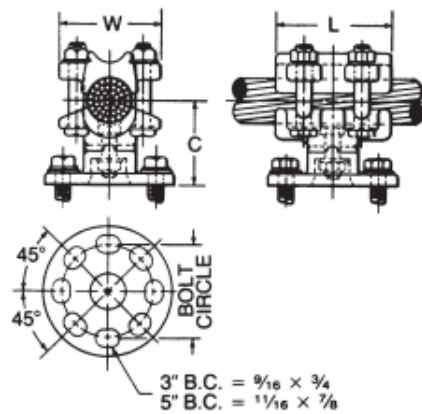
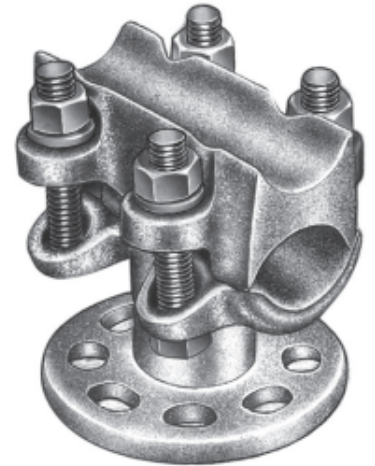
BUS SUPPORTS ALUMINUM CABLE TO INSULATOR

ALUMINUM
ACS

Aluminum alloy bus support for aluminum cable. Clamping bolts have hex-stops for one-wrench installation.

Cap screws are supplied for upright mounting.

Material: Castings—356-T6 aluminum alloy
Clamping hardware—aluminum alloy
Mounting hardware—galvanized steel



Product Data & Conductor Size

CATALOG NUMBER	CABLE RANGE		CABLE DIAMETER (MM)		BOLT CIRCLE DIA.	DIMENSIONS INCHES (MM)			APPROX. WT. EACH LBS. (KG)
	AAC	ACSR	SMALL GROOVE	LARGE GROOVE		L	C	W	
ACS63	#4-250 MCM	#4-4/0	.232-.500 (5.9)-(12.7)	.500-.575 (12.5)-(14.6)	3	3 (76.2)	2-5/8 (69.9)	2-7/16 (61.9)	1.9 (.86)
ACS65	#4-250 MCM	#4-4/0			5	3 (76.2)	2-5/8 (69.9)	2-7/16 (61.9)	2.8 (1.27)
ACS93	4/0-600 MCM	4/0-477	.522-.656 (13.3)-(16.7)	.656-.893 (16.7)-(22.7)	3	3-1/4 (82.6)	2-3/4 (69.9)	2-11/16 (68.2)	2.2 (1.0)
ACS95	4/0-600 MCM	4/0-477			5	3-1/2 (88.9)	2-3/4 (69.9)	2-11/16 (68.2)	3.1 (1.41)
						3-3/4	3	3-3/16	2.5